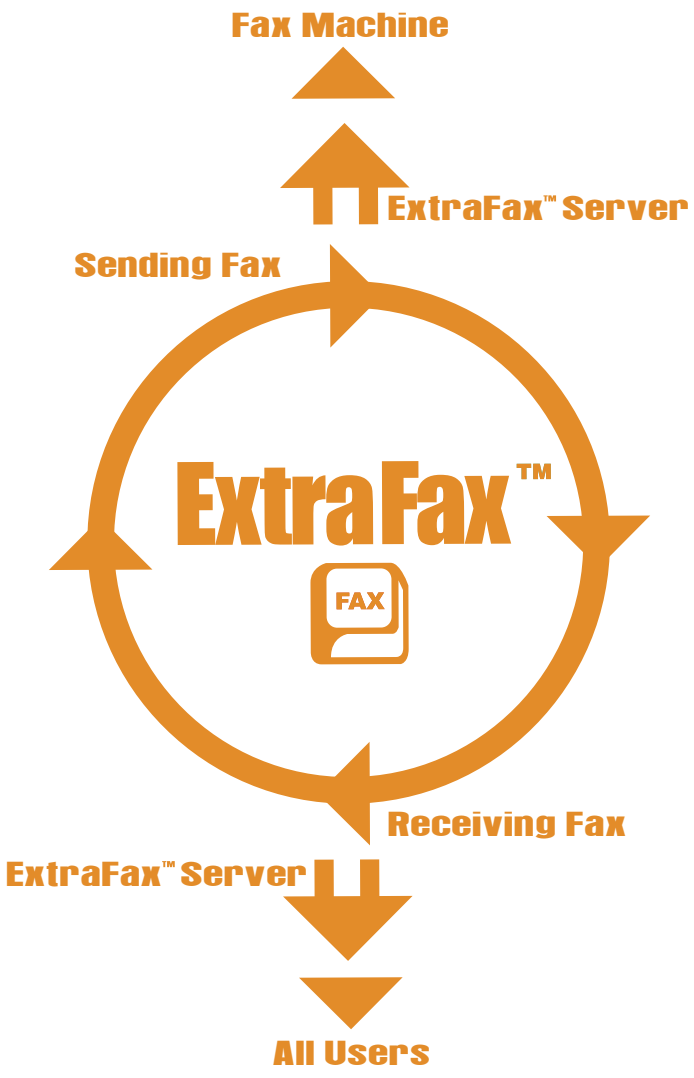


ExtraFax™



THE ULTIMATE FAX SERVER FOR DOMINO IS THE SOLUTION FOR ALL USERS.



Are you using an ordinary fax machine and paying a huge amount of money for your long distance bills?

Do you find it difficult to send or receive faxes while on business travel?

Have you ever imagined the convenience of accessing faxes and e-mails through one single interface?

What is ExtraFax™ brings together the two important forms of communication in today's business world - fax and e-mail. Using ExtraFax™, working with a fax machine together with another computer becomes a thing of the past. ExtraFax™ combines and integrates fax and e-mail functions into one. If you are on the road and have access to the Internet, you will be able to keep in touch with your clients at all times by e-mail and fax. You no longer need to tell clients in advance which fax number to use and when, because they can get in touch by using the very same fax number wherever you are. Thanks to ExtraFax™, gone are the days with high hotel fax charges.

Least Cost Routing

ExtraFax™ maximizes the use of free connection provided by the Internet and minimizes the use of chargeable connection provided by the public telephone networks. The cost of routing is, therefore, significantly lower than ordinary fax machines that rely only on public telephone networks. ExtraFax™ further reduces the cost of routing by supporting automatic routing of inbound faxes based on DID / DTMF / CSID / incoming channel.

Fax-On-Demand (FOD)

Fax-on-demand is an automatic facility to deliver documents requested by inbound callers. From a touch tone telephone, inbound callers can simply follow a series of voice-prompted menu to request for documents to be delivered via fax.

Load Balancing and Failover Capabilities

In an environment requiring fax service of high scalability and availability, multiple ExtraFax™ servers can be deployed. ExtraFax™ balances out the transmission requests among multiple ExtraFax™ servers. Such an arrangement avoids the situation when a particular ExtraFax™ server gets jammed because of overwhelming requests while other ExtraFax™ servers have spare capacity to handle more requests. High availability is achieved by automatic routing of requests from one ExtraFax™ server to another. It is especially useful when a particular ExtraFax™ server is down for service.

E-mail-to-Fax Function

Whether you work in the office or at home, you can send and receive faxes as e-mails without the need of a separate fax machine. Moreover, you can forward a received fax as an e-mail as well as send out an e-mail as a fax.

Direct Fax from All Windows Applications

ExtraFax™ supports "Print-to-Fax" facility. All Windows applications can be enriched with fax capability using ExtraFax™. An output document from such an application can be directed to ExtraFax™ and transmitted out as a fax. Documents of various formats, generated in Windows 95 / 98 / NT / 2000 environments, can also be attached to outgoing faxes.

Transmission Scheduling and Priority

It is often desirable to postpone the transmission of large volume faxes during non-office hours to take advantage of lower telephone costs and to reduce the delay to other fax users. Moreover, it is also desirable to schedule a transmission so that a fax reaches the other side of the globe at a particular time allowing for immediate attention. ExtraFax™ supports such transmission scheduling as well as transmission priority thereby allowing outgoing faxes with higher priority to be transmitted first.

Logging and Reporting

A comprehensive log of events and errors throughout the fax cycle is gathered by ExtraFax™. Call statistics are provided by ExtraFax™ to allow for cost accounting and allocation.

Other Features

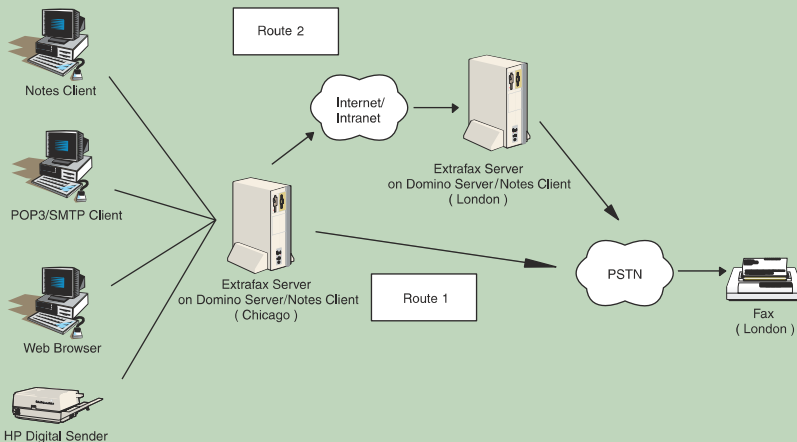
- Supports wide variety of fax devices
- Available in different languages
- Customizable cover page
- Broadcasts faxes using existing mailing data
- Highly programmable that enables easy integration with other applications or systems

ExtraFax™ provides a user-friendly interface. Through the interface, fax profiles can be defined for individual users as well as user groups. A profile consists of the following parameters:

- * Personal fax number
- * Billing code
- * Delivery report
- * Default cover page
- * Minimum and maximum priority
- * Resolution
- * Orientation
- * Completion notification
- * Attachment transmission only
- * Fax image retention in fax log
- * Preferred outbound channel / port

How Does ExtraFax™ Work?

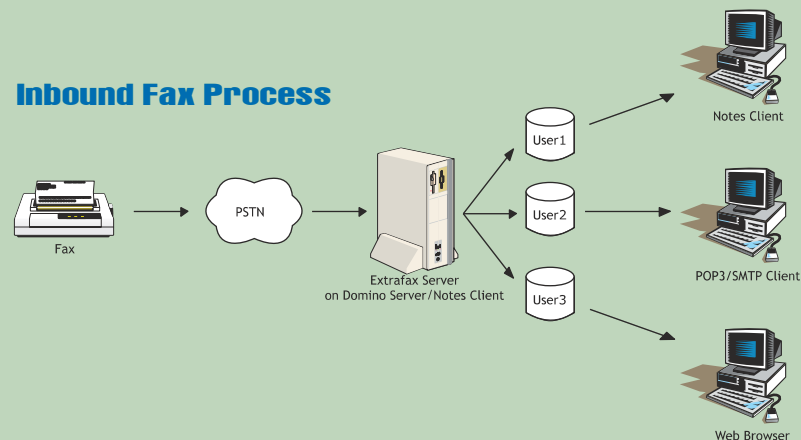
Outbound Fax Process



With ExtraFax™, faxes can be sent using Notes client, Internet mail (POP3 / SMTP) client, web browser or HP Digital Sender. The actual transmission of faxes is controlled by an ExtraFax™ server. The server will determine if a fax is to be routed through telephone networks or the Internet / Intranet. When there is only one ExtraFax™ server in the environment, the fax will obviously be transmitted via the telephone network (Route 1). When there is more than one ExtraFax™ server in the environment, the sending ExtraFax™ server will locate a receiving ExtraFax that minimizes the routing cost. The receiving ExtraFax™ server will then be responsible to deliver the fax to the recipient (Route 2). For example, a fax from Chicago to London is routed first to the ExtraFax™ server in London via the Internet. The London ExtraFax™ server will process the fax and then send it to the receiving fax machine in London. The routing does not make use of any International connection resulting in minimal costs for the fax transmission.

Inbound faxes are received over the telephone network. When an inbound fax is received by an ExtraFax™ server, the fax will be distributed to the mail box of its intended recipient(s) according to DID/DTMF/CSID/inbound channel information. Faxes that cannot be distributed based on this information will then be distributed to a designated operator. The operator can then forward the faxes using e-mail forwarding.

Inbound Fax Process



True Mobility

ExtraFax™ allows faxes to be sent, received, and exchanged using the standard e-mail interface. Wherever you are, people can get in touch by using the very same fax number.

Privacy and Confidentiality

Personal fax numbers are supported so that faxes can be directly addressed to individual recipients rather than a common fax machine. Receiving faxes are therefore as safe as receiving e-mails in a personal mailbox.

Easy Installation

ExtraFax™ is designed from the ground up as a 32-bit application and operates as either a Domino server add-on task or a standalone process in a Lotus Notes client. The installation and setup is straight forward requiring no training on administration and operation.

The image displays several screenshots of the ExtraFax 6.0 software interface. The top-left screenshot shows a 'Route Fax' window with a table of received faxes. The table has columns for Date, Time, Mins, Pages, Sender's CSID, Printed, and Received through. The data rows show various fax receipts from 08/01 to 07/26.

Date	Time	Mins	Pages	Sender's CSID	Printed	Received through
08/01	11:33 AM	0.6	1	12869-7998		GfAX n
08/01	11:30 AM	0.9	1	12869-7998		GfAX n
07/31	12:46 PM	0.6	1	12869-7998		GfAX n
07/31	12:39 PM	0.6	1	12869-7998		GfAX n
07/31	12:14 PM	3.2	2	22869-7998		GfAX 3
07/31	11:57 AM	3.4	2	22869-7998		GfAX n
07/31	11:41 AM	0.6	1	12869-7998		GfAX n
07/31	11:34 AM	0.6	1	12869-7998		GfAX n
07/27	06:24 PM	0.6	1	12869-7998		GfAX n
07/27	06:20 PM	0.9	1	12869-7998		GfAX n
07/26	04:33 PM	1.7	2	22869-7998		GfAX n
07/26	04:19 PM	0.6	1	12869-7998		GfAX n
07/26	04:02 PM	0.6	1	12869-7998		GfAX n
07/26	03:52 PM	0.6	1	12869-7998		GfAX n

The top-right screenshot shows the 'User Preferences' dialog box with fields for 'Personal Fax Number', 'Billing Cycle', 'Preferred Server Center', 'Inbound Routing Setup', 'Fax On Demand', 'Archiving', 'Transmission Error Log', and 'Agent Error Log'. The 'Fax On Demand' section is expanded to show 'Fax-on-Demand Root' with fields for 'Name' (Welcome Message) and 'File' (Welcome.wsp).

The bottom-left screenshot shows a detailed view of a received fax from 'SYSTEK Information Technology Ltd'. The sender's address is Suite 2518, Sun Hung Kai Centre, 30 Harbour Road, Wanchai, Hong Kong. The fax number is (852) 2627 9888. The transmission time is shown as 'From: Kevin Lau' and 'To: molly'.

The bottom-right screenshot shows a smaller version of the 'Route Fax' window, displaying a list of received faxes similar to the top-left screenshot.

Requirements

ExtraFax™ Server:

Windows NT / Windows 2000 / Lotus 4.5 or above / Lotus Notes client 4.5 or above

ExtraFax™ Client:

Windows 95 / 98 / NT / 2000

Supported Hardware:

BrookTrout, GammaLink Faxboard, Class 1, 2 or 2.0 modem, Dialogic VFX/40ESC Plus Board

Technical Support

At Extracomm, we pride ourselves on our superior customer service. Access technical support at our comprehensive web-site at www.extracomm.com